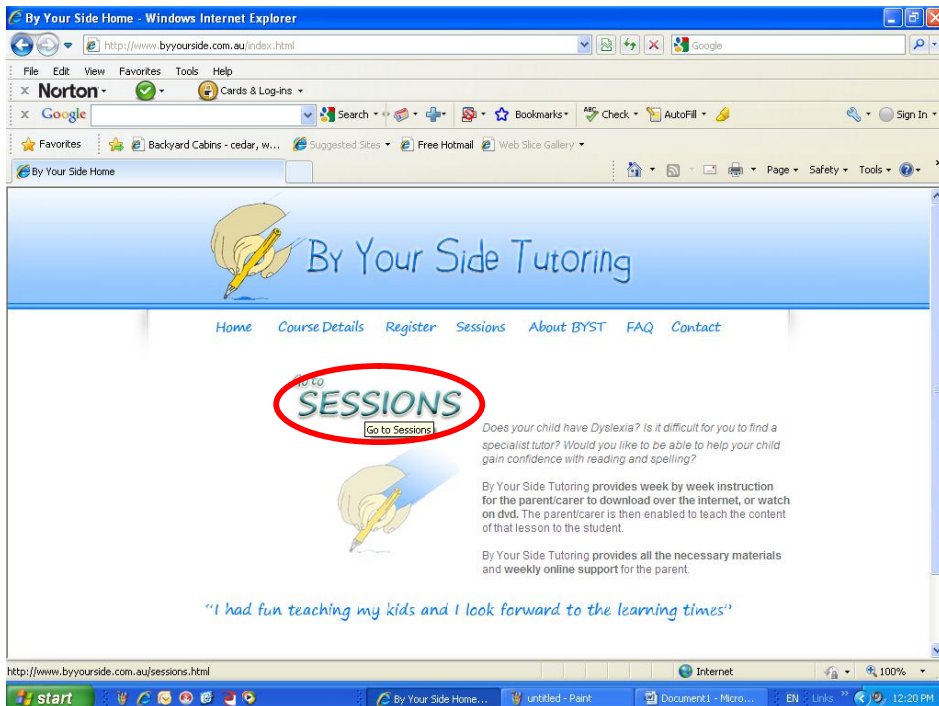
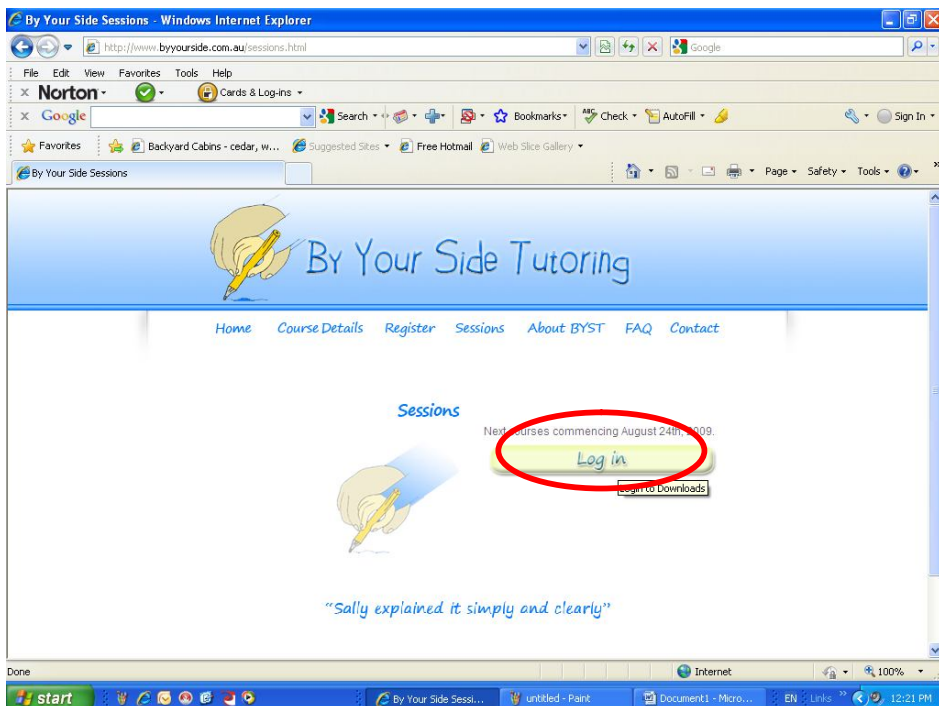


# BYST: How to setup weekly Live Session

1. Go to [www.byourside.com.au](http://www.byourside.com.au)
2. Click on **Go to Sessions**.

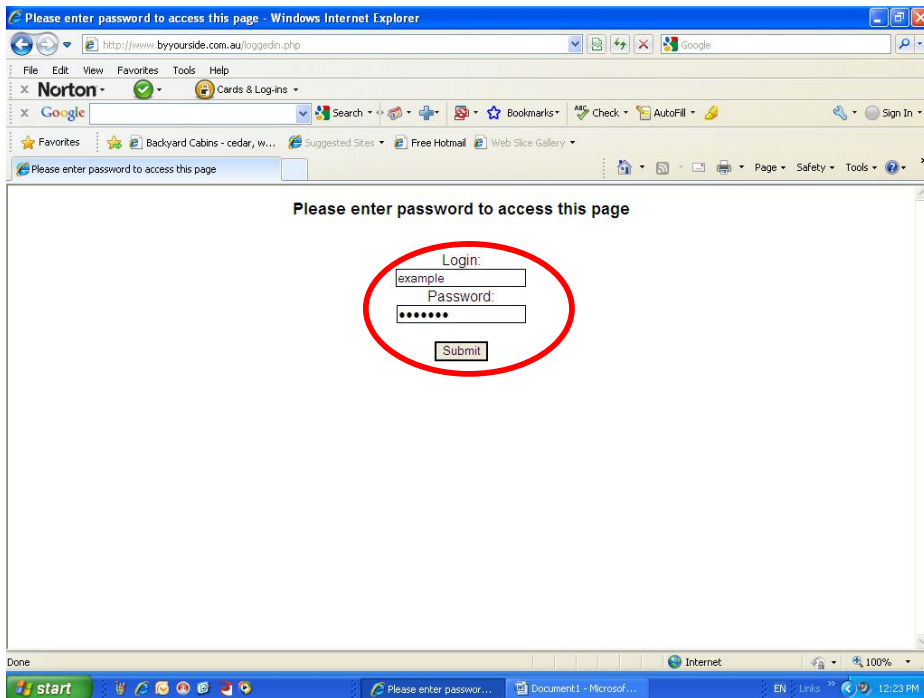


3. Click on **Log in**.

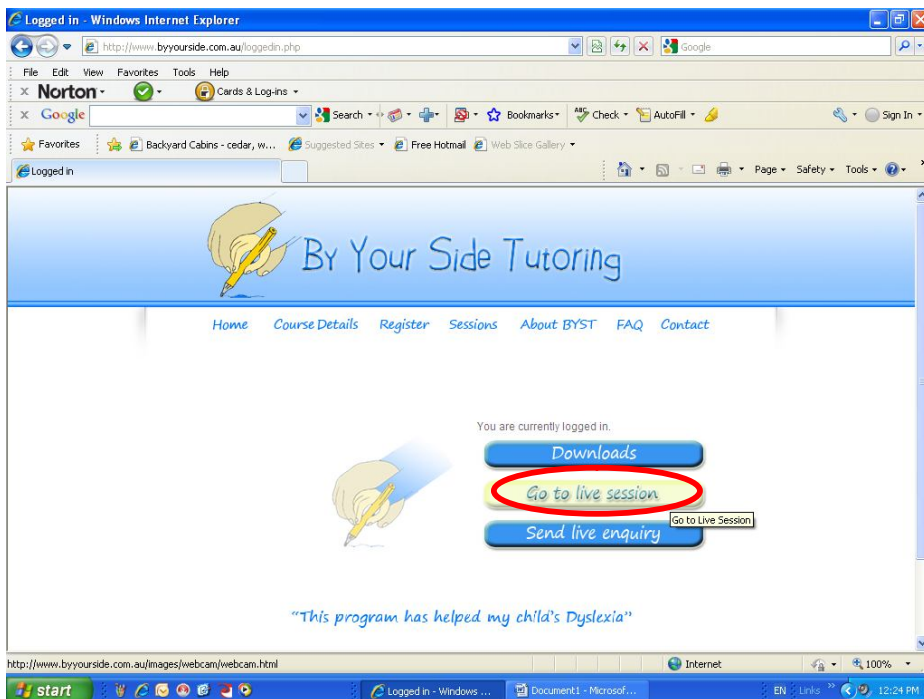


# BYST: How to setup weekly Live Session

4. Enter **Login** and **Password** (information given to you earlier) and click **Submit**.

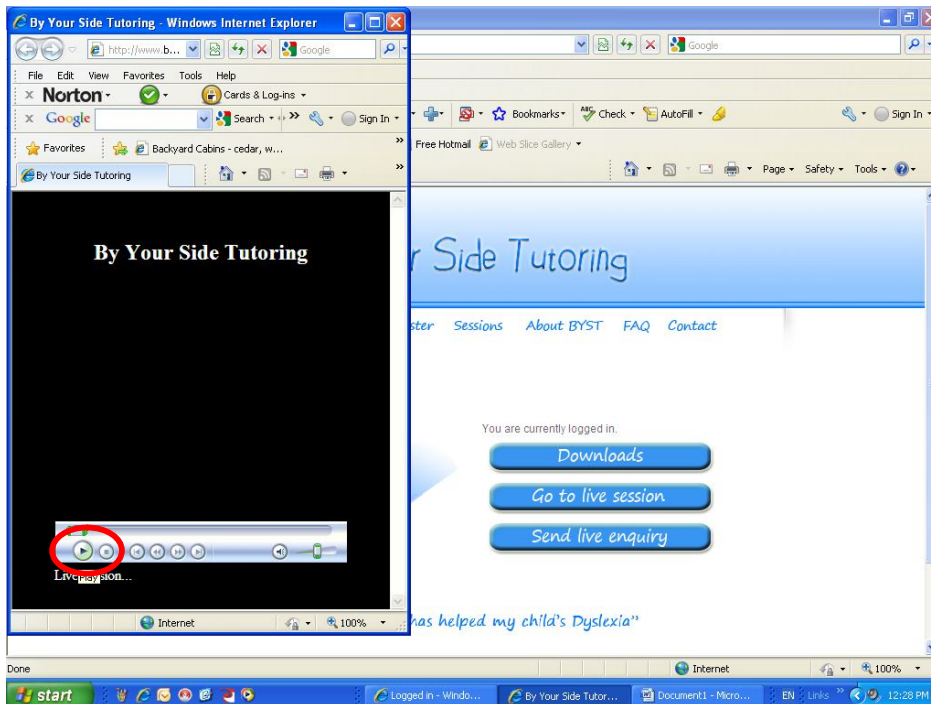


5. Click on **Go to live session**.

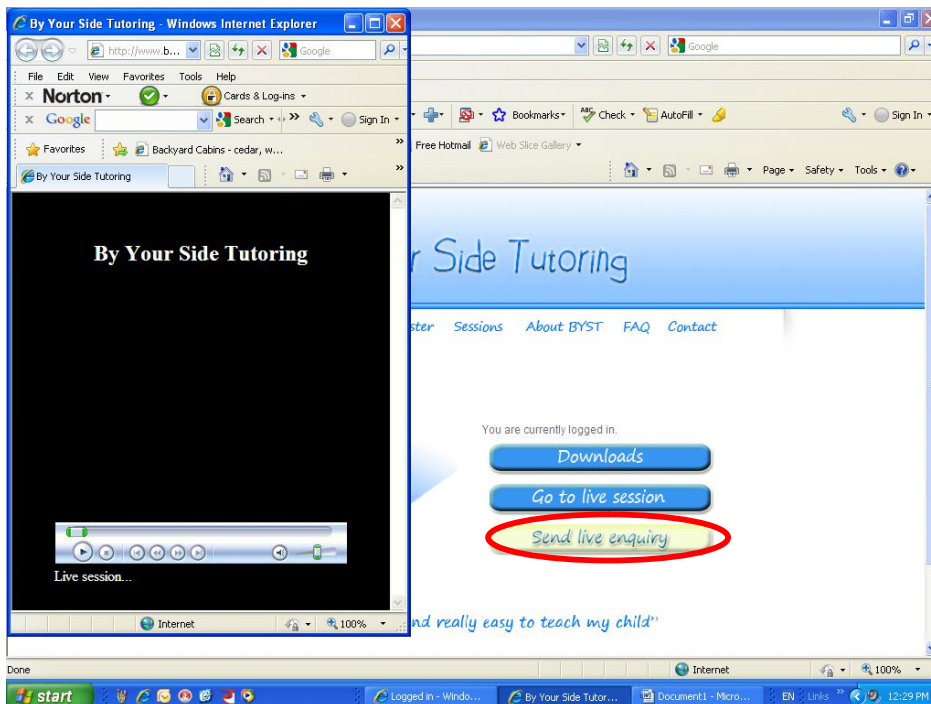


# BYST: How to setup weekly Live Session

6. Move window to the left and press the **play** button (this will start video footage).

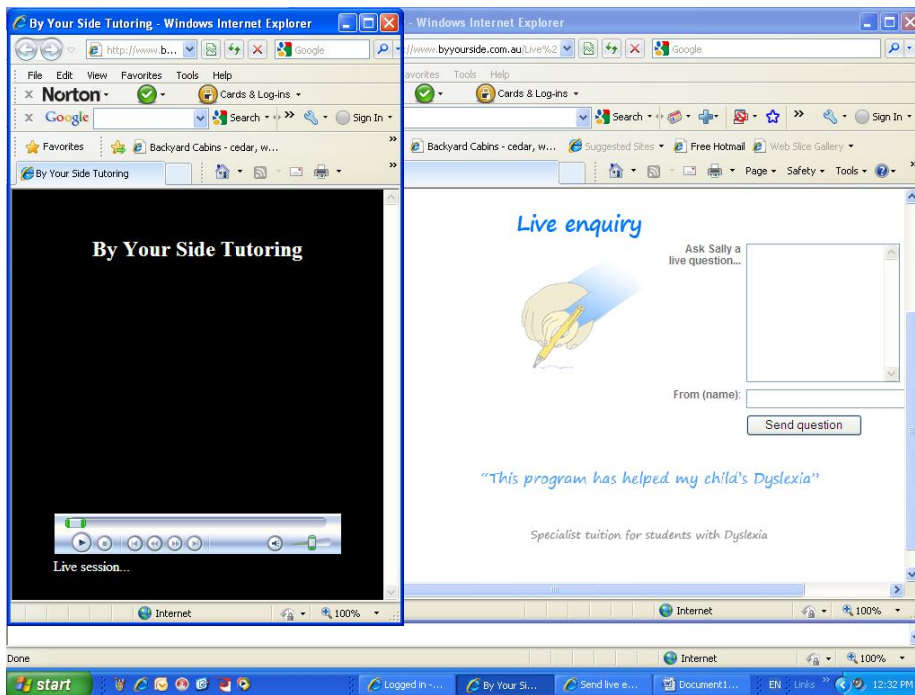


7. Click on **Send live enquiry**.

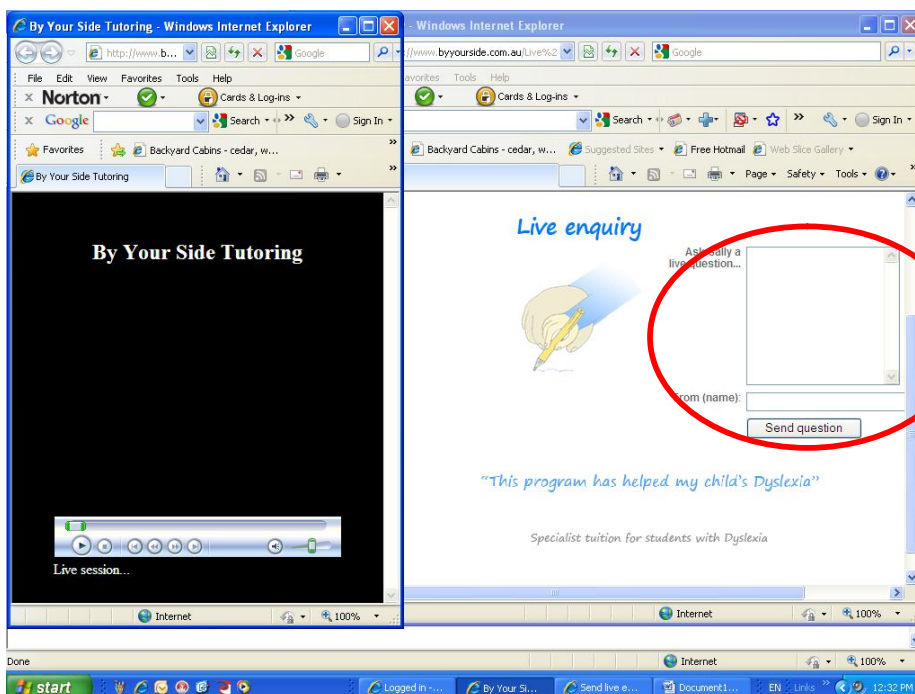


# BYST: How to setup weekly Live Session

8. Set window sizes so you can swap between windows easily, allowing you to send live enquiries and watch Sally at the same time.



9. When sending a live enquiry, simply fill in the form and include your name in the field provided and click **Send question** when done.



# BYST: How to setup weekly Live Session

10. Click on the 'here' option to go back to send more live enquiries.

